


REMOTE TEMPERATURE SENSOR with MANUAL OVERRIDE ACCESSORY

INSTALLATION INSTRUCTIONS

IMPORTANT: READ ALL OF THESE INSTRUCTIONS BEFORE INSTALLING THE SENSOR.

SAFETY CONSIDERATIONS

Read and follow the manufacturer's instructions carefully. All wiring must conform to local and national electrical codes. Improper wiring or installation may damage the sensor.

Recognize safety information. This is the safety alert symbol . When the safety alert symbol is present on equipment or in the instruction manual, be alert to the potential for personal injury.

Understand the signal words DANGER, WARNING, and CAUTION. These words are used with the safety alert symbol. DANGER identifies the most serious hazards that will result in severe personal injury or death. WARNING signifies a hazard that could result in personal injury or death. CAUTION is used to identify unsafe practices that may result in minor personal injury or property damage.

GENERAL

The Remote Sensor measures indoor air temperature and sends this information to the thermostat. The sensor measures temperature with a range of -20° to 120° F. The sensor also has an OVERRIDE button which could place the thermostat into the override mode for 2 hours.

For information on override operation please consult the Owner's Manual of your thermostat.

1 SENSOR LOCATION

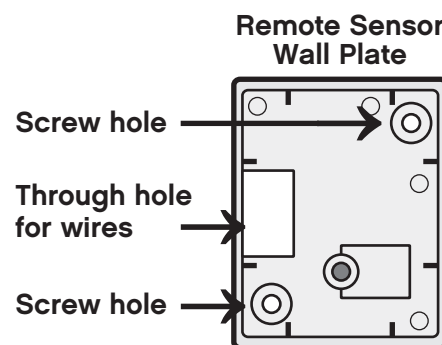
CORRECT LOCATIONS The Remote Sensor should be mounted approximately five feet from the floor, close to or in a frequently used room, preferably on an inside partitioning wall or on a section of wall without pipes or ductwork. Mount the sensor where temperature operating limits are within -20 to 120 F and the humidity operating range is within 0 to 95% relative humidity, non-condensing.

INCORRECT LOCATIONS The Remote Sensor should NOT be mounted close to a window, on an outside wall, or next to a door leading to the outside. Do not mount the sensor in a location where it would be exposed to direct light and heat from a lamp, the sun, a fireplace, or any other temperature-radiating object that may cause a false reading. Finally, do not mount the sensor close to or in direct airflow from supply registers or return air grilles or in areas with poor air circulation (such as behind a door or in an alcove).

2 SENSOR INSTALLATION

INDOOR INSTALLATION Perform the following procedures to install the sensor:

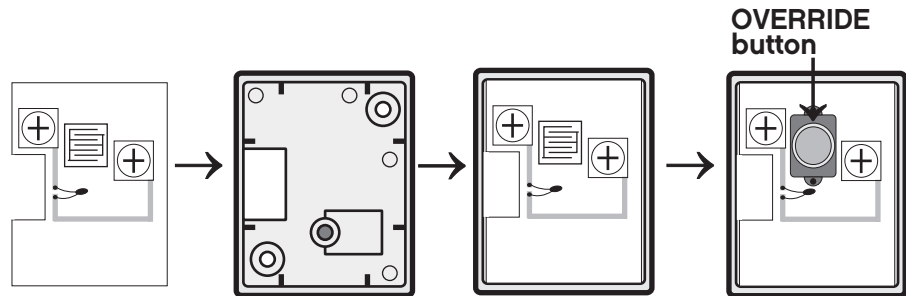
1. Place the Remote Sensor wall plate on the wall. Mark the mounting screw holes on the wall through the holes in the wall plate.
2. Drill two 3/16-in. mounting holes in the wall at the location marked in Step 1.
3. Mount the Remote Sensor wall plate to the wall with the screws provided.



3 SENSOR ASSEMBLY

Align and press the Remote Sensor circuit board onto the wall plate as shown. Install the button onto the circuit board.

Note: The OVERRIDE button can be disabled by putting non-conductive tape over the switch pad before installing the OVERRIDE button onto the circuit board.



4 WIRING REQUIREMENTS

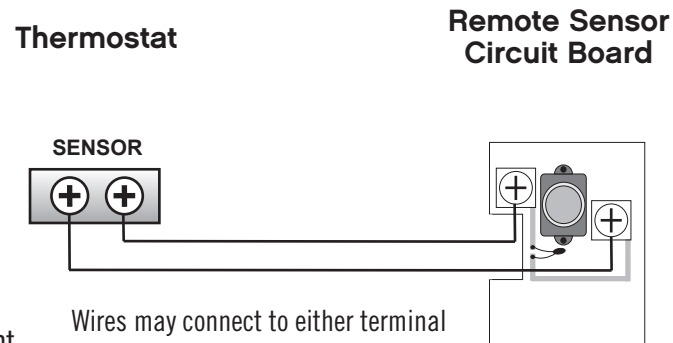
The Remote Sensor should be connected to the thermostat using 18 - 22 gauge, 2-conductor unshielded thermostat wire. Wire length not to exceed 200 feet.

IMPORTANT: Do not run sensor wiring in the same conduit as the 24VAC thermostat wiring. Electrical interference may cause the sensor to give incorrect temperature readings.

5 SENSOR WIRING

The connection between the Remote Sensor and the thermostat must be wired per the connection diagram. Only two conductors are used, therefore the extra conductors should be cut from each end of the cable to prevent shorting. The sensor has no polarity so just connect the two sensor wires from the thermostat to the two terminals on the remote sensor. Multiple thermostats cannot share a single remote sensor.

Seal the through hole in the wall plate with fireproof material to prevent drafts from affecting the sensor reading. Secure the top cover to the wall plate using either the supplied standard or tamper proof screw.



6 AIR TEMPERATURE VS. TEMPERATURE RESISTANCE

NOTE: All sensor wiring must be in compliance with all applicable local and national codes.



WARNING: Risk of Electric Shock.
Disconnect the power supply before making electrical connections. Contact with components carrying hazardous voltage can cause electric shock and may result in severe personal injury or death.

AVERTISSEMENT : Risque de décharge électrique.
Débrancher l'alimentation avant de réaliser tout branchement électrique. Tout contact avec des composants conducteurs de tensions dangereuses risque d'entraîner une décharge électrique et de provoquer des blessures graves, voire mortelles.

Temperature Accuracy: -20 to 65°F +/-3°F, greater than 65 to 80°F +/-2°F, greater than 80 to 99°F +/-3°F, greater than 99 to 120°F +/-5°F.
Typically power requirements, dimensions and shipping weight are also specified in our literature.
Power Requirements: Supplied by ProStat+ thermostat
Dimensions: 1.38"W x 1.75"L x 0.62"H
Shipping Weight: 0.5lbs

Air Temperature		Resistance in Ohms
°F	°C	
-20	-28.9	106,926
-10	-23.3	80,485
0	-17.8	61,246
10	-12.2	47,092
20	-6.7	36,519
30	-1.1	28,558
40	4.4	22,537
50	10	17,926
60	15.6	14,356
70	21.1	11,578
80	26.7	9,398
90	32.2	7,672
100	37.8	6,301
110	43.3	5,203
120	48.9	4,317